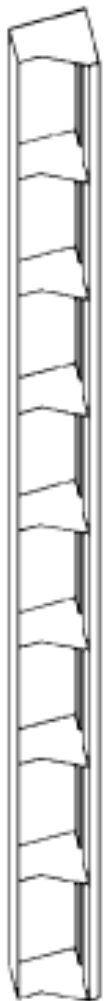


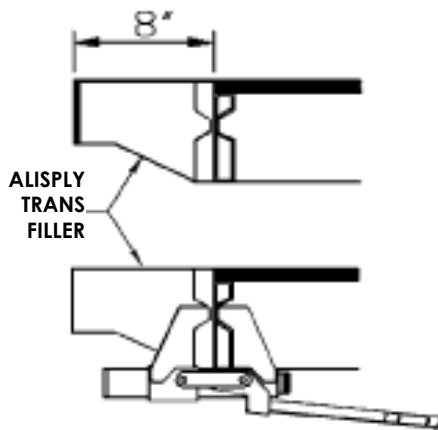
### Transition Filler

The all-steel 8" Transition Filler provides a convenient connection between Alisply™ to Steel-Ply®, Versiform®, and the Max-A-Form® concrete forming systems. The most common use of the Transition Filler is for forming details, such as corners and pilasters.

One side rail of the Transition Filler is clamped to an Alisply panel or filler and the other side rail is either wedged bolted or bolted to the adjacent panel. A vertical row of flat ties is required at the connection between the Transition Filler and Steel-Ply.



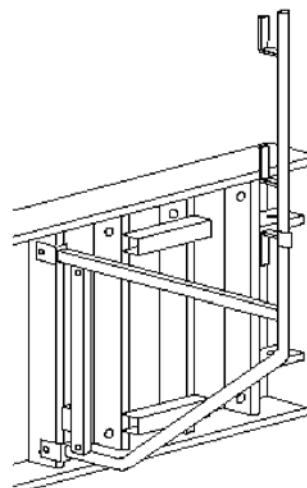
| No.       | Description              | Wt (lbs) |
|-----------|--------------------------|----------|
| SY 722308 | 8" x 8'-0" Trans. Filler | 128      |
| SY 722306 | 8" x 6'-0" Trans. Filler | 96       |
| SY 722304 | 8" x 4'-0" Trans. Filler | 67       |



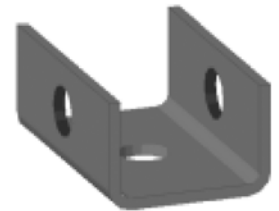
Transition Filler and Application

### Walkway Bracket

The Alisply Walkway Bracket is manufactured with a guardrail post. The guardrail post has two "L" brackets with nail holes welded to it for attachment of lumber guardrails. At the bottom of the post is a sliding "L" bracket with nail holes to attach a toeboard. The Walkway Bracket is attached to the forms at one of the accessory holes on vertical crossmembers with the attached pin. If the crossmembers are running in the horizontal direction, the Walkway Connector is bolted to the crossmember and the Walkway Bracket is attached to the Walkway Connector. The capacity of the Walkway Bracket is 400 lbs. at a 4:1 safety factor (5 ft. maximum spacing).



WALKWAY BRACKET ATTACHED TO VERTICAL CROSSMEMBERS SY 54554

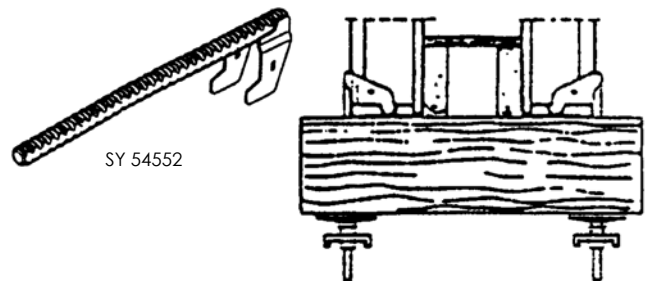


WALKWAY CONNECTOR SY 722300

Walkway Bracket Application

### Bulkhead Rod

The Bulkhead Rod is used with double 2x lumber or steel walers, plywood or solid lumber and plate & nut to create a job-built bulkhead. The capacity of the Bulkhead Rod is 4400 lbs. at a 2.5:1 safety factor.



BULKHEAD ROD AND TYPICAL APPLICATION