

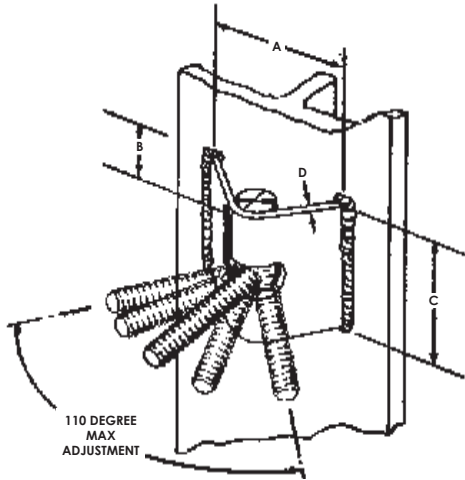
# COIL THREAD



## TIEING/HANDSET

### Angle Tie Bracket

This bracket offers a full 110 degree movement 55 degrees in either direction. Designed to eliminate the unsafe practice of field bending of coil rod or bolts. Mascons assumes no liability for the welded connection.



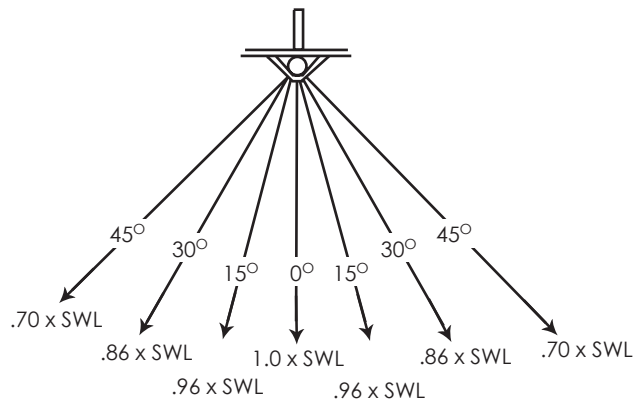
### LOAD REDUCTION FACTORS

Contact our technical service department for load reduction factors for angles other than those shown.

### WARNING!

When angle loads are placed on the weld angle bracket the SWL must be reduced as shown. If the SWL is not reduced, greater loads than expected will be applied thereby reducing the factor of safety.

COIL THREAD DIAMETER	MAXIMUM SAFE WORKING LOAD TENSION (LBS)	A	B	C	D
1/2"	9,000	5-5/16"	2-9/32"	4"	1/4"
3/4"	18,000	5-5/16"	2-9/32"	4"	1/4"
1"	31,500	5"	2-1/8"	5-3/4"	1/2"



### Speed Bolt & Nut

Special fitting up bolts and nuts are used for securing steel form panels together. The tapered nose of the bolt acts as a draft pin and helps align the forms. The thread design and clearances between the nut and bolt permits quick assembly and dismantling of the forms. The open thread design permits concrete to be easily knocked out of the threads.

No.	Size	Wt (lbs)
SY 32191	3/4" x 2"	0.50
SY 32195	3/4" x 3"	0.60
SY 32194	3/4" x 4"	0.70
SY 32193	3/4" NUT	0.30

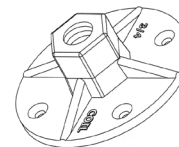


### Nut Washer

Coil nut washers are available with 3/4" acme or coil thread diameters. Made of ductile iron, the nut washer is designed to take the place of a loose hex nut and flat washer.

No.	Size	SWL Tension (lbs)	Wt (lbs)
DS 31348	3/4" Acme	9,000	1.30
DS 31346	3/4" Coil	9,000	1.30

Other sizes available on request.



SWL provides a factor of safety of approximately 2 to 1.